

Product information

87 21 300

KNIPEX Cobra® QuickSet High-Tech Water Pump Pliers

DIN ISO 8976



- Fully open, push, grab!
- Additional fast adjustment on the workpiece by sliding the pliers handle
- Combines the proven, reliable locking of the hinge bolt with an additional push function which makes it easier to work in very confined and inaccessible areas
- The adjustment directly on the workpiece is possible by simply sliding the pliers handle
- Reliable locking of the hinge bolt with the first workload. The gripping width of the pliers is then fixed and can only be adjusted by pressing the button.
- To re-activate the sliding function, the hinge bolt must be released by pressing the push button and the pliers must be completely opened again
- Self-locking on pipes and nuts: no slipping on the workpiece and low handforce required
- Gripping surfaces with special hardened teeth, teeth hardness approx. 61 HRC: high wear resistance and stable gripping
- Box-joint design for high stability due to double guide
- Pinch guard prevents operators' fingers being pinched



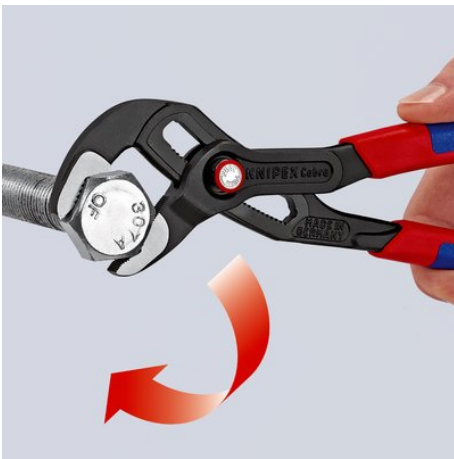
General

Article No.	87 21 300
EAN	4003773078524
Pliers	grey atramentized
Head	polished
Handles	with non-slip plastic coating
Weight	530 g
Dimensions	300 x 52 x 19 mm
Standard	DIN ISO 8976
REACH compliant	does not contain SVHC
RoHS compliant	not applicable

Technical details

Adjustment positions	25
Capacity for pipes, inches (diameter)	Ø 2 3/4 Inch
Capacities for nuts	60 mm
Capacities for pipes (diameter)	Ø 70 mm

technical change and errors excepted



Hinge bolt locks itself with the first workload



Position jaw – simply slide and close pliers



Press the button – open pliers completely